

# S4A

# Data Analysis Software



**GRAPHIC ANALYSIS**  
Powerful graphic analysis



**ONLINE READING**  
Real time data reading with USB or Ethernet connection



**FREE TO USE**  
No payment or subscription needed



**ANALYSIS ON EXPORTED FILES**  
Export data to the .XLSX and .CSV file



**READOUT OF SCREENSHOTS**  
Read screenshots from SUTO S331



**REMOTE CONNECTION**  
Read out field devices via Internet connections



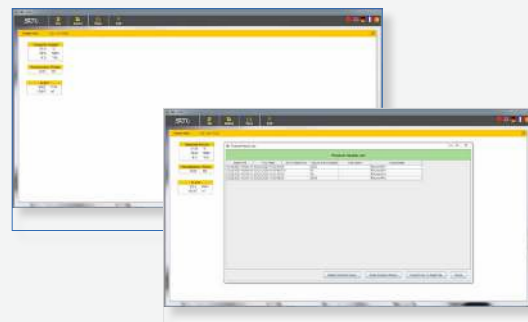
## Benefits

- ✔ Free software with quick analysis through powerful graphs and exported tables
- ✔ On-site real time analysis through online data reading
- ✔ Remote access of SUTO displays and Loggers that are equipped with LTE/4G modem
- ✔ Easy installation with installation wizard
- ✔ Multiple languages available

### Data Analysis with S4A

S4A is a stand alone free software used to analyze measurement data recorded by SUTO data loggers. Local stored logger files from any SUTO device with logging function can be opened, analyzed and exported.

- Real-time online readings of a SUTO device via a USB , Ethernet or wireless LTE/4G connection.
- Powerful graphic tools allowing basic and in-depth analyzes of the data and prepare reports.
- Easy is to set up interface for hassle-free use. No complicated setup menus or configurations. Simply connect SUTO data loggers and read logging files with a single click.
- Integrated export function offers data exchange in .xlsx and .csv format.
- Software recordings are downloaded to the PC via USB, LAN or wirelessly using the LTE/4G Modem.
- The wireless connection offers full functionality as if the devices would be connected via USB. This makes it most flexible and versatile.



#### Remote Office Location

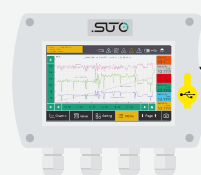
**S4A**



Local Ethernet LAN

#### Data Logging

**S331**  
Data Logger



#### Field Devices

**Modbus/RTU**  
Sensors

**Analog**  
Sensors

## Download

The S4A Software is offered for free and the latest version can be downloaded from the SUTO homepage, no registration or subscription needed.

[www.suto-itec.com](http://www.suto-itec.com)