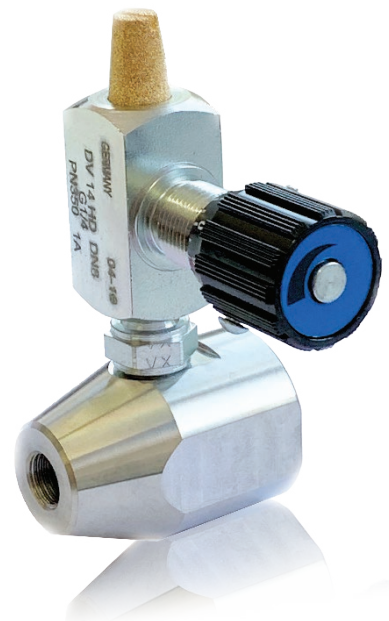
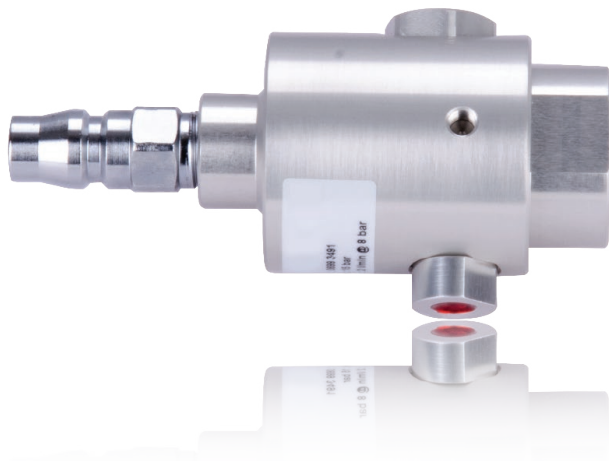


Accessories



Ordering

Please use the following table to assist in placing your order with our sales staff.

Order No.	Description	Application	Picture
C190 0002	Closing cap for S421/S452 material: 1.4404	To close the measuring sections in case the sensor unit is removed	
A695 0009	Thread adapter, G 1/2" internal to PT 1/2" external, SUS303	Used to adapt S401 or S450 to a PT thread ball valve	
A695 0008	Thread adapter, G 1/2" internal to NPT 1/2" external, SUS303	Used to adapt S401 or S450 to a NPT thread ball valve	
C190 0116	Flow conditioner	Wafer type flow conditioners, which is flanged between two flanges 5-8 times diameter upstream of the flow meter. Please specify nominal pipe diameter and pressure	
A530 1105 / A530 1106 / A530 1111 / A530 1113	High pressure installation device. To be used for pressure > 1.5 MPa	For safety reasons we recommend using this installation device whenever the operating pressure exceeds 1.5 MPa * A530 1105 - High pressure installation device for S401-220 mm * A530 1106 - High pressure installation device for S450-220 mm * A530 1111 - High pressure installation device for S401-400 mm * A530 1113 - High pressure installation device for S450-400 mm	
A530 1206	SUTO Spot Drilling Set for 1/2" and 3/4" access points, including 13 mm and 19 mm drills + all required accessories	This drilling tool is used to drill holes into compressed air pipes under pressure through a ball valve	
A553 0104	Sensor cable 5 m with M12 connector, open wires, AWG 24 (0.2 mm ²)	5 pole cable, used to connect sensors to display, data loggers and third-party systems	
A553 0105	Sensor cable 10 m with M12 connector, open wires, AWG 24 (0.2 mm ²)	5 pole cable, used to connect sensors to display, data loggers and third-party systems	
A553 0146	Sensor cable 5 m with M12 and RJ45 connectors, PoE supported, AWG 24 (0.2 mm ²)	Used to connect SUTO flow sensor with Modbus/TCP to the local network.	
A553 0161	M8 female to M12 male converter cable	Used to connect the S415/S418 to a Modbus/RTU splitter	









Ordering

Please use the following table to assist in placing your order with our sales staff.

Order No.	Description	Application	Picture
A553 0165	Sensor cable, 5 pole, AWG 24 (0.2 mm ²), 50 m	Used to connect sensors and devices to gateways, power supplies and PLCs	
A553 0166	Sensor cable, 5 pole, AWG 24 (0.2 mm ²), 100 m	Used to connect sensors and devices to gateways, power supplies and PLCs	
A553 0167	RS-485 cable, 4 pole twisted pairs, AWG 24 (0.2 mm ²), 50 m	Used to connect sensors and devices to Modbus Masters	
A553 0168	RS-485 cable, 4 pole twisted pairs, AWG 24 (0.2 mm ²), 100 m	Used to connect sensors and devices to Modbus Masters	
A554 0009	Power supply, DIN rail, Input 85 ... 264 VAC, output: 24 VDC / 60 Watt	This power supply is used to supply sensors with 24 VDC / 2.5 A DIN rail installation.	
A554 0007	Power supply, wall-mountable, Input 85... 264 VAC, output: 24 VDC / 15 Watt	This power supply is used to supply sensors with 24 VDC / 0.6 A Wall mountable casing.	
A554 0008	Ball valve, G1/2", full pass-through	This ball valve is used to install insertion type flow sensors with a G1/2" connection.	
P554 0009	Wall thickness meter	The instrument is used to measure the wall thickness of pipes. Too often the inner diameter of pipes is not exactly known, but this information is required for an accurate flow measurement. By measuring the wall thickness and the pipe size the exact inner diameter can be calculated	
A554 0107	Mains unit 100-240 VAC/24 VDC, 0.5 A for M12-sensors, 1.5 m cable	Simple power supply for M12 sensors with 24 VDC	
A554 2005	Service kit for sensor configuration including software	This service kit can be used for all SUTO sensors to change settings and check sensors	
C190 0594	G1/2" inner thread for flow sensor, G1/4" inner thread for pressure sensor, R1/2" external thread to process connection (ball valve)	Thread adapter to combine S401 flow sensor with pressure sensor in one access point.	

Ordering

Please use the following table to assist in placing your order with our sales staff.

Order No.	Description	Application	Picture
A699 3491	Measuring chamber, 2 l/min @ 0.8 MPa, fast connector, without filter, max pressure 1.5 MPa(g), suitable for all SUTO dew point sensors	For easy connection and disconnection to compressed air system through quick-disconnector	
A699 3492	Measuring chamber, 2 l/min @ 0.8 MPa, 6 mm hose quick connector, without filter, max. pressure 1.5 MPa(g), suitable for all SUTO dew point sensors	For easy connection and disconnection to compressed air system through quick-disconnector	
A699 3493	By-pass-type chamber with 6 mm hose in and out connection up to 1.5 MPa(g)	This chamber can be used in applications where the measured gas is by-passed through the chamber	
A699 3500	Measuring chamber, 4 l/min @ 0.8 MPa, hose fast connector, with filter, recommended pressure range 0.3 ... 1.5 MPa, convenient dew point measurement of gas/air with SUTO portable dew point meters	The sample gas/air is connected to the chamber through a 6 mm Teflon® hose. The chamber is mounted to the SUTO portable dew point meters through the 1/2" G-type thread connection. Parking and measurement position is selected through the handle at the chamber, which allows quick measurement results	
A699 3501	By-pass-type chamber with 6 mm hose in and out connection up to 1 MPa, convenient dew point measurement of gas/air with SUTO portable dew point meters	This chamber can be used in applications where the measured gas is by-passed through the chamber to avoid any gas/air loss. The chamber is mounted to the SUTO portable dew point meters through the 1/2" G-type thread connection. Parking and measurement position is selected through the handle at the chamber, which allows quick measurement results	
A699 3496	Measuring chamber for dryer installation, 2 l/min @ 0.8 MPa, hose fast connector, without filter, max. pressure 1.6 MPa	The sample gas/air is connected to the chamber through a 6 mm Teflon® hose. The chamber is mounted to stationary S2XX dew point sensors through the 1/2" G-type thread connection. This chamber can be conveniently mounted to the frame or cabinet of a dryer	
A699 3590	High pressure chamber up to 35 MPa	In applications where the pressure is exceeding 1.5 MPa, this chamber can be used. Through the adjustable valve a small purge is set to ensure a gas flow through the sensor element (response time)	
Dew point sensor protection caps		Protection caps are used to protect the dew point sensor element from mechanical impacts or dust. The proper cap selection depends in application. Please contact customer service	

Ordering

Please use the following table to assist in placing your order with our sales staff.

Order No.	Description	Application	Picture
A554 0002	Test pot 11.3 % rH	Is used to check dew point sensors. The pot creates a constant relative humidity of 11.3 %. The resulting dew point is depending on the ambient temperature, at 25 °C it is equal to -6.3 °C	
D500 0005	S51 panel meter, with 4 ... 20 mA input and 2 alarm outputs, 85 ... 265 VAC supply, 96 x 48 mm panel	Installations in dryers or similar equipment as dew point indicator	
C219 0055	M12 connector with RS-485 termination resistor, 120 Ω	Termination resistor for enhancing communication stability of RS-485 network Connect it to the final device of RS-485 network	
A554 3310	M12 RS-485 (Modbus/RTU) splitter	Stationary Modbus/RTU splitter for easier wiring	
A554 0011	RS-485 Repeater	A repeater is used whenever the bus length of RS-485 exceeds 500 m. After every 500 m of cable distance a repeater is recommended	
A554 0331	RS-485 / USB converter	This converter brings RS-485 to the USB port of the PC	
D554 0031	8-channel current input module, 0 ... 20 mA, Modbus/RTU	For connecting up to 8 sensors with 0 ... 20 mA / 4 ... 20 mA signal via RS-485 to S330 / S331	
A554 0087	USB OTG memory stick	USB memory drive for transferring data between SUTO data loggers (S331 / S551 / S120 with display / S130 with display) and a PC. The USB drive has a USB-A and a Micro-USB connector	
A699 3302	Wireless DP transmitter adapter for use with S4C-DP application	For the wireless connection of SUTO dew point transmitters via the S4C-DP app for smart phones	



www.suto-itec.com



sales@suto-itec.com