

S600

Portable Compressed Air Purity Analyzer

1 Introduction

About this guide

This quick user guide contains all instructions and safety information for operating and using the S600.

This guide is intended for qualified personnel involved in the operation of the S600.

Make sure you have fully read and understood the instructions before using the S600.



For more information, scan the QR code to see the instruction manual.

About the S600

The S600 is an all-in-one Portable Compressed Air Purity Analyzer. It measures, records and verifies particle concentration, dew point, oil vapor, temperature, and pressure in a compressed air system.

2 Safety instructions

⚠ WARNING

- Ensure to follow all national regulations before and during installation and operation.
- Only authorized and qualified personnel are permitted to install the device.
- Never install or use the device in designated explosive zones.
- Never disassemble the device. There are no serviceable parts inside.
- Never exceed the maximum permitted pressure range (see device label).
- Always keep the transportation temperature, storage temperature of the device between -10°C and 50°C.
- Always avoid direct UV and solar radiation when storing the device.
- Always keep the storage humidity of the device <90% rH with no condensation.

3 Delivered components

S600



USB disk



Purge filter for pre-measurement



Two Teflon hoses with connectors



Power supply adapter



Quick User Guide



Calibration Certificate



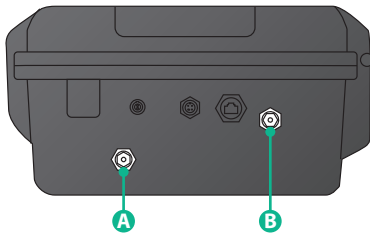
4 Operation

⚠ ATTENTION

- Purge the measuring point before using the S600 on that point. For this, use the purge filter, and check for rough contamination.
- The S600 must be operated within or better than compressed air quality Class 4.5.4 according to the ISO8573-1. Too dirty gas can affect measurement accuracy and even damage the sensor.
- The S600 shall only be used after filtration. It cannot be used at the compressor outlet.
- Before measuring, make sure that the pressure is within the range of 3... 15 bar(g).
[Low pressure version 1.5... 3.0 bar(g)]

Step 1 Connect compressed air

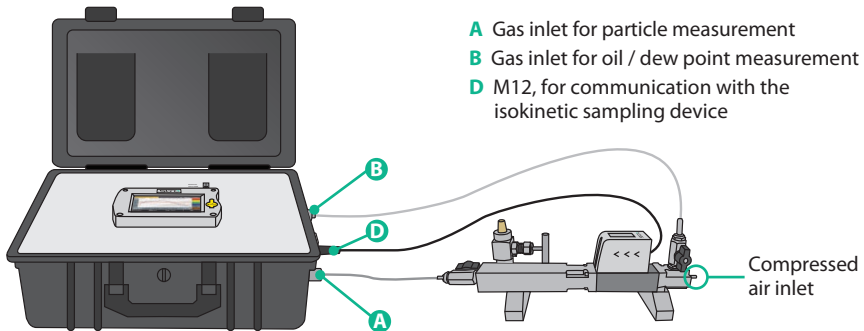
Option 1 — Connect with compressed air directly (not in accordance with ISO 8573)



- A Gas inlet for particle measurement
- B Gas inlet for oil / dew point measurement

- The S600 must be positioned adjacent to the measuring point on a level surface.
- The hoses should not be bent heavily and should be installed with a large curve radius to avoid turbulence in the airflow.

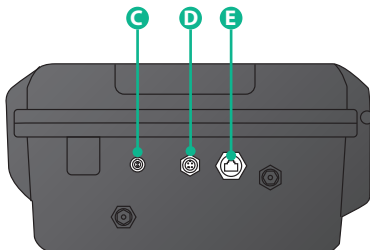
Option 2 — Connect with compressed air via the isokinetic sampling device (recommended)



- A Gas inlet for particle measurement
- B Gas inlet for oil / dew point measurement
- D M12, for communication with the isokinetic sampling device

Note: The PTFE hose used for the particle measurement must be positioned so that it is straight and aligned with the instrument. It is essential that it is not bent or otherwise distorted.

Step 2 Connect electrical ports



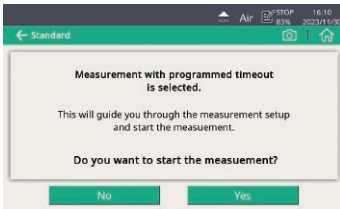
- C Power supply input
- D M12 connector, communication port with the isokinetic sampling device
- E RJ-45 connector, Ethernet port for IP networking, (Optional, not required for operation)

Step 3 Perform the guided measurement

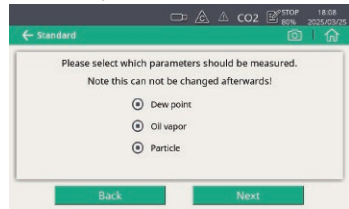
Take monitoring with programmed time out as an example.

1 Click **Menu** > **Guided measurement** > **Monitoring with programmed time out**.

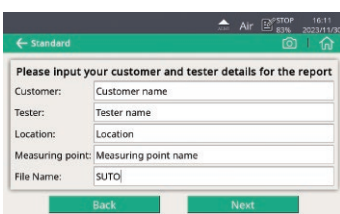
2 Measurement confirmations



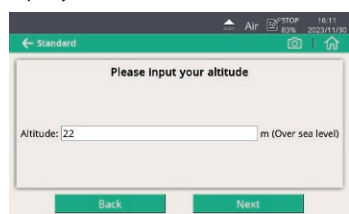
3 Select the parameters to be measured



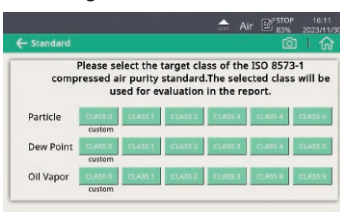
4 Enter information



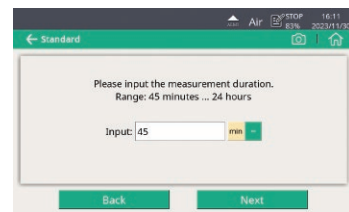
5 Input your altitude



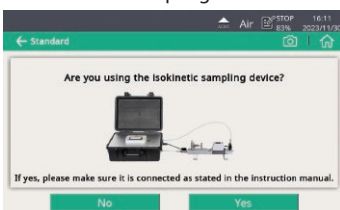
6 Select target class



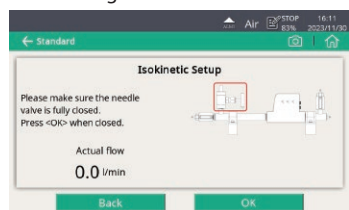
7 Enter measurement duration



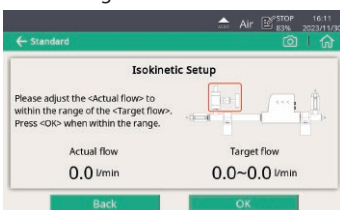
8 Use isokinetic sampling device?



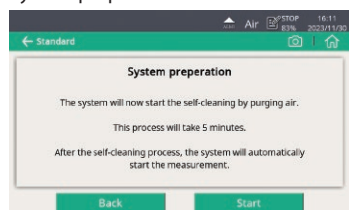
9 Flow setting 1



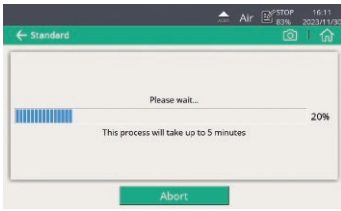
10 Flow setting 2



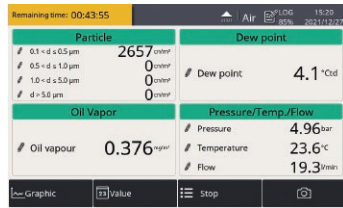
11 System preparation



12 Self-calibration and purging



13 Under measurement



Note: Please wait until the measurement is finished. Observe the remaining time, and do not power off the instrument during the measurement; otherwise, the data will be lost.

After performing guided measurements, you can view and export measurement files through **Guided Measurement > Report Manager**.

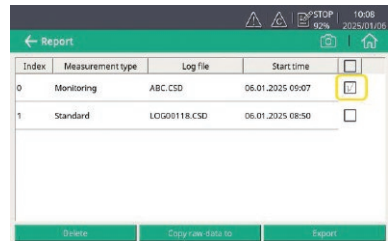
5 Export PDF reports

Option 1 — Via the USB port

- 1 Insert the USB stick into the USB port on the front panel of the S600.



- 3 Select files to be exported.



- 2 Enter **Report Manager** interface.

- 4 Click **Export** to export files to the USB stick.

Option 2 — Via the S4A software

The report can also be exported through the S4A software. For details, see S600 Instruction Manual.

www.suto-itec.com

SUTO iTEC GmbH

Grißheimer Weg 21
D-79423 Heitersheim
Germany
Tel: +49 (0) 7634 50488 00
Email: sales@suto-itec.com

SUTO iTEC (Asia) Co. Ltd.

Room 10, 6/F, Block B, Cambridge Plaza
188 San Wan Road, Sheung Shui, N.T.
Hong Kong
Tel: +852 2328 9782
Email: sales.asia@suto-itec.com

SUTO iTEC (China) Co. Ltd.

D3 Building, Unit A, 11/F, TCL International E City
1001 Zhongshanyuan Road, Nanshan,
Shenzhen, China
Tel: +86 (0) 755 8619 3164
Email: sales.cn@suto-itec.com

SUTO iTEC Inc.

5460 33rd St SE
Grand Rapids, MI 49512
USA
Tel: +1 (616) 800-SUTO
Email: sales.us@suto-itec.com